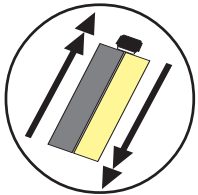


CARTRIDGE SHOULD BE KEPT AT 70° F+ FOR BEST RESULTS

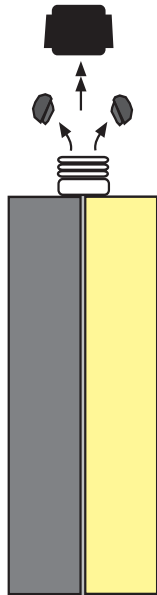
**INSTRUCTIONS FOR USING CARTRIDGE UNIT**

**1**

SHAKE WELL  
BEFORE USE

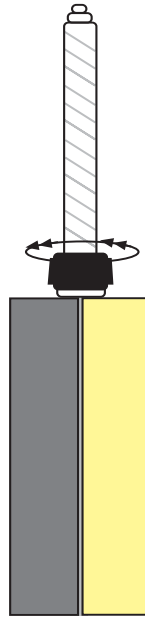


Unscrew Locking  
Nut and  
Remove D Caps



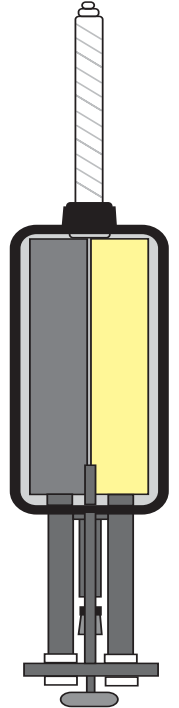
**2**

Place Static Mixer  
Over Cartridge  
Neck and Secure  
Tightly with  
Locking Nut



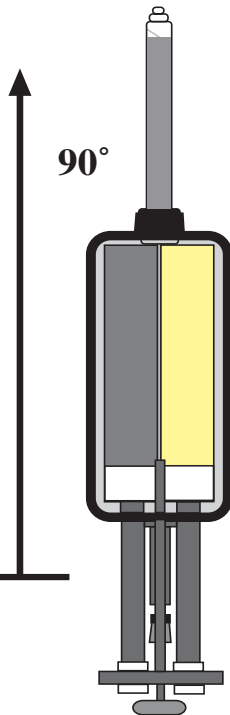
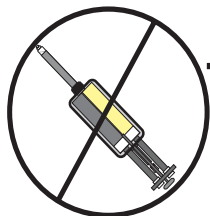
**3**

Pull Back  
Pistons in Gun  
and Securely  
Load Cartridge  
in Cradle



**4**

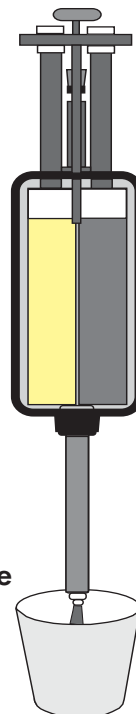
Hold Gun  
Straight Up at  
a 90° Angle  
and Slowly  
Pull Trigger to  
Purge Air from  
Unit. Drive  
Material to  
Top of Mixer.



**5**

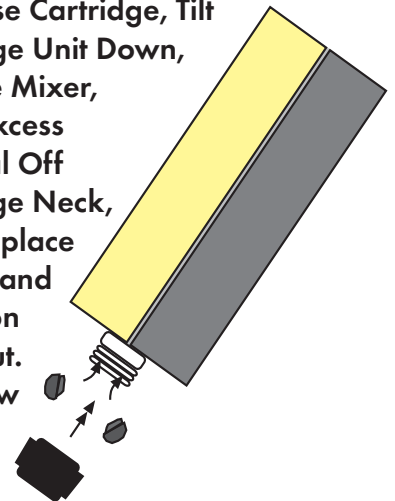
Tilt Gun  
Down and  
Squeeze First  
2-3 Shots of  
Material into  
A Disposable  
Cup, Etc.

Gun Should Be  
Tilted Down  
Whenever  
Dispensing or  
When Cartridge  
is Being Used.



**6**

To Re-use Cartridge, Tilt  
Cartridge Unit Down,  
Remove Mixer,  
Wipe Excess  
Material Off  
Cartridge Neck,  
Then Replace  
D-Caps and  
Screw on  
Lock Nut.  
Use New  
Mixer  
with  
Next  
Application.





# IMPORTANT! PLEASE READ BEFORE USE

## INSTRUCTIONS FOR USING THE CARTRIDGE UNIT (CONTINUED)

### 1. Product Description

Spal-Pro RSF is a rapid-setting, two-component polyurea liquid of 100% solids content. When cured, Spal-Pro RSF is a charcoal gray solid with a hard rubber-like hardness of A88-A94 depending upon temperature. Spal-Pro RSF is designed for use in areas where final temperatures range from +120°F (49°C) to -30°F (-34°C).

Spal-Pro RSF's primary use is as a filler for control and construction joints in floor areas subjected to hard wheel vehicles. It is also ideal for filling joints in non-traffic areas such as under racks, at walls, at column diamonds and for filling random cracks.

Due to Spal-Pro RSF's rapid gel time of 2-4 minutes, it must be installed using a dual-feed power dispensing system or with pre-filled dual cartridges available from manufacturer. Manual dispensing is impractical due to rapid-set.

#### Limitations

- Spal-Pro RSF has limited expansion capabilities due to its relatively high hardness. Accordingly, it should always be installed after the area has been brought down to its ultimate operating temperature and stabilized for 7 days plus.
- Spal-Pro RSF should only be used in areas where temperature is -30°F (-34°C) or higher.
- Spal-Pro RSF is intended for interior use only. Exposure to sunlight or other sources of UV rays can cause discoloration.
- Contact manufacturer if product will be exposed to direct chemical contact once installed.

### 2. Material Storage

Keep Spal-Pro RSF in tightly sealed containers in dry, shaded areas where temperatures average 50°F to 85°F (10°C to 30°C). Protect from sunlight, freeze-thaw and excessive temperatures. If storing partially used part B material, place nitrogen blanket (or other desiccant) over material prior to storage.

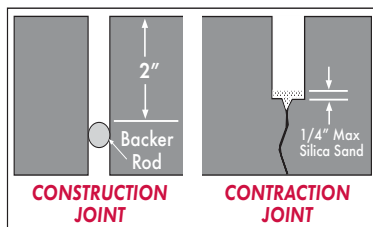
### 3. Timing of Installation

Defer installation until area has reached its ultimate operating temperature and is stabilized there for 7 days plus is recommended.

### 4. Equipment and Tools

Spal-Pro RSF must be installed using dual-feed, power dispense pump systems set at 1:1 by volume mix ratio, or with pre-filled, dual cartridges available from manufacturer. Additional equipment/supplies that may be required include conventional hand tools, solvent for clean-up, wiper cloths, etc. Personal safety equipment is always a must with chemicals. See MSDS for complete information.

### 5. Joint Design Details



### 6. Surface Preparation

All concrete surfaces to which Spal-Pro RSF will bond must be structurally sound and free of substances that may impair adhesion (saw cut laitance, dirt, debris, coatings/sealers, frost, oil, etc.). For narrow joints in new floors, we recommend the use of a dustless saw with a blade that will properly expose bare concrete on both joint walls. For adhesion to steel, mechanically abrade steel to insure mechanical bond. Call M/M for additional methods.

### 7. Installing at Various Temperatures

Spal-Pro RSF's working (gel) time and cure rates will vary slightly depending on work area temperature and temperature of product at time of installation. In general, the gel time and cure time will be shorter when the area and product temperatures are higher.

### 8. Installation of Spal-Pro RSF

Important: Thoroughly read MSDS and balance of these instructions before opening containers or attempting to install. Wear/use all personal safety equipment called for in MSDS and follow all cautions concerning working environment.

Dual-Cartridge kits may also incur settlement. Aggressively shake to re-disperse all chemicals. Dual cartridge units should be maintained at about the same temperature by keeping them in a warming box or warm/hot water.

#### Filling Joints and Cracks

All fillers including Spal-Pro RSF have the potential to leave residue or stain on adjacent slab surface. If appearance is important, or if coating/sealer is to be applied later, protect adjacent surfaces with tape, soap, or Metzger/McGuire's Spf (Stain Preventing Film). Avoid getting sealer inside joint or crack; adhesion could be compromised. Joint should be filled in one pass, filling from bottom to top to avoid entrapping air bubbles.

Spal-Pro RSF is only effective when its finished profile is flush with the floor surface. To achieve this, we recommend overfilling (crowning) then razoring off the excess after the product has converted into a complete solid. Razoring is best achieved 1 1/2 - 3 hours after filling, depending on the area temperature and the temperature of the product at time of installation. After three hours the filler's increasing hardness may make shaving more difficult, resulting in ratchet or chatter marks. For smoother shaving after three hours apply a small amount of heat immediately prior to shaving. Do not overheat filler or burn/char. Do not grind or sand the overfill.

### 9. Caution on Chemical Cure

Spal-Pro RSF cures chemically through a reaction of parts A & B. Exercise caution during cure; do not inhale fumes, do not get chemicals on skin or in eyes. See MSDS.

### 10. Low Fills, Bubbles

Should Spal-Pro RSF cure too low, solvent wipe and apply additional filler. Spal-Pro RSF adheres well to itself. Abrading the first pass will provide mechanical bond insurance for second pass. If bubbling or air entrapment occur, follow material application with a propane torch or heat gun to eliminate air pockets. Heat should be applied prior to initial cure (within approx. 2 minutes).

### 11. After the Installation

#### Clean-Up

Clean all tools and spills of unreacted material with solvent (toluol, xylol, MEK, etc.). Cured material can be removed by razoring or sanding.

#### Surface Treatments

If the floor is to be acid-etched, Blast-Trac'd or coated, allow several days cure if possible. A test coat is always advisable. Once cured, Spal-Pro RSF is not affected by mechanical cleaning or most scrubbing compounds.

#### Traffic Exposure

Time required prior to exposure to traffic will depend on room operating temperature and product temperature when installed. In general, Spal-Pro RSF is ready for light traffic in 2 hours and full, heavy traffic in 3 hours. Always test the filler for hardness prior to traffic exposure.

### 12. Joint Filler Separation

Separation (adhesive or cohesive) of the filler may occur if it is installed prior to 90 day slab cure or if room is not stabilized at ultimate operating temperature at the time of installation and is subsequently dropped. Other factors such as joint spacing and concrete mix design can also influence separation. Separation voids may be refilled with additional Spal-Pro RSF. See Tech Sheet T-5 for more details.

**CAUTION: READ AND UNDERSTAND FULL INSTALLATION INSTRUCTIONS AND MSDS PRIOR TO USE OF THIS PRODUCT.**

WARRANTY: Metzger/McGuire Co. solely and expressly warrants that its Spal-Pro RSF shall be free from defects in material and workmanship for 180 days from the date of purchase. Unless authorized in writing by an officer of Metzger/McGuire, no other representations or statements made by Metzger/McGuire or its representatives, in writing or orally, shall alter this warranty. Metzger/McGuire makes no warranties, implied or otherwise, as to the merchantability or fitness for ordinary or particular purposes of its products and excludes the same. If any Metzger/McGuire product fails to conform with this warrant, Metzger/McGuire will replace the product at no cost to the purchaser. Purchaser's sole remedy in any case shall be limited to the purchase price or replacement cost of product and specifically excludes labor and the cost of labor, lost wages and opportunity costs, and all other possible incidental, consequential or special damages resulting from any claim of breach of warranty, breach of contract, negligence or any legal theory. Any warranty claim must be made within one (1) year from the date of material purchase. Metzger/McGuire does not authorize anyone on its behalf to make any written or oral statements which in any way alter the installation procedures or written installation instructions published in its product literature or on its packaging labels. Any installation of Metzger/McGuire products which fails to conform with such installation information or instructions shall void this warranty. Purchaser shall be solely responsible for determining the suitability of Metzger/McGuire's products for the purchaser's intended purpose.

 **METZGER/McGUIRE**  
For Technical Assistance Call  
**(800)223-6680**