



600 ML (300x300) Dual Cartridge Kit

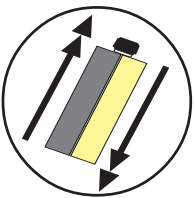
**IMPORTANT INSTRUCTIONS
PLEASE READ BEFORE USE**

CARTRIDGE SHOULD BE KEPT AT 70° F+ FOR BEST

INSTRUCTIONS FOR USING CARTRIDGE UNIT

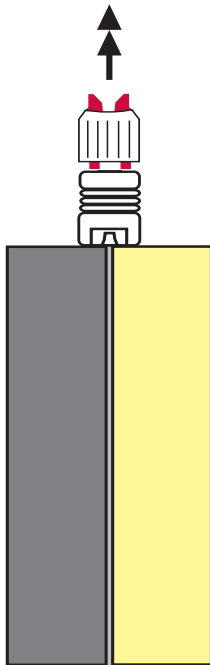
1

SHAKE WELL
BEFORE USE
(45 seconds+)



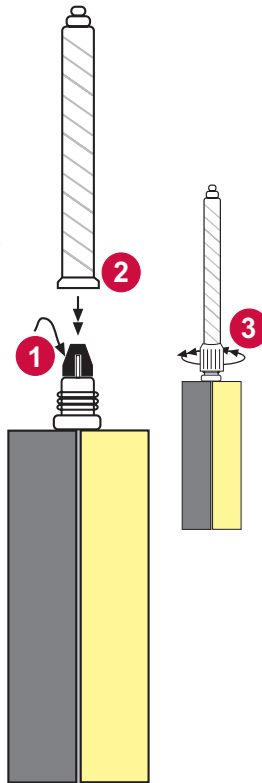
Unscrew lock nut and pull plug out

Allow cartridge to sit upright for a few minutes to de-air



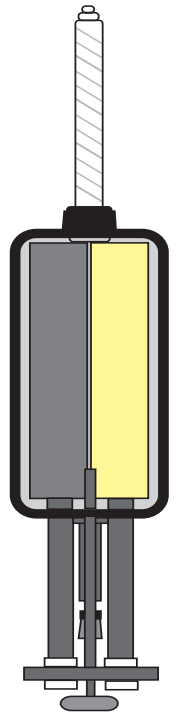
2

Insert flow restrictor into top ports. Place static mixer over flow restrictor onto neck of cartridge. Screw lock nut over mixer and secure tightly



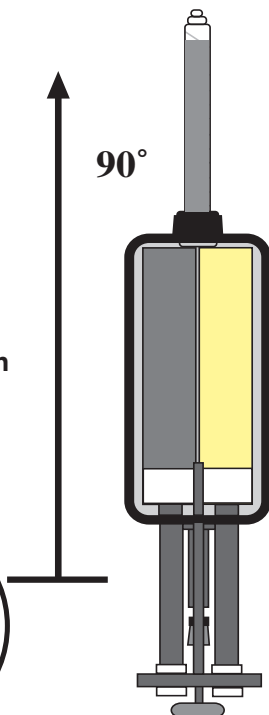
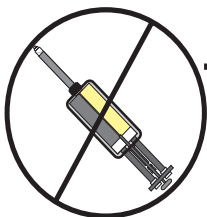
3

Pull back pistons in gun and securely load cartridge in cradle



4

IMPORTANT! Hold Gun straight up at a 90° angle and slowly pull trigger to purge air from unit. Drive material to top of mixer.



5

Tilt gun down and squeeze approx. 3 shots of material into a disposable cup, etc. until color appears to be consistent.

Gun should remain tilted down whenever dispensing or when cartridge is being used - do not tilt gun up during use as partially mixed material may run back into cartridge!

