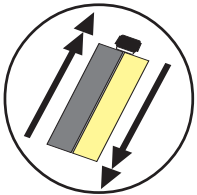


CARTRIDGE SHOULD BE KEPT AT 70° F+ FOR BEST RESULTS

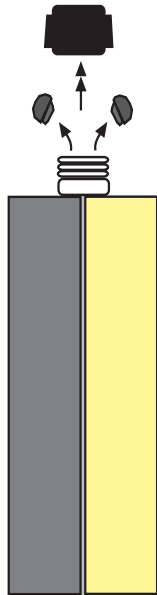
INSTRUCTIONS FOR USING CARTRIDGE UNIT

1

SHAKE WELL
BEFORE USE

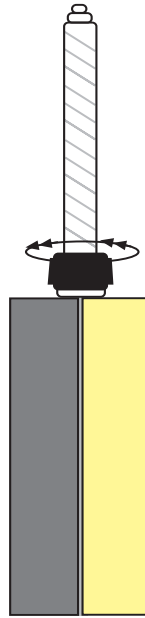


Unscrew Locking
Nut and
Remove D Caps



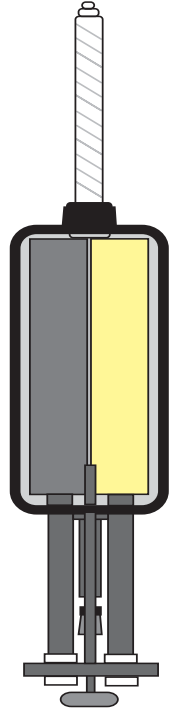
2

Place Static Mixer
Over Cartridge
Neck and Secure
Tightly with
Locking Nut



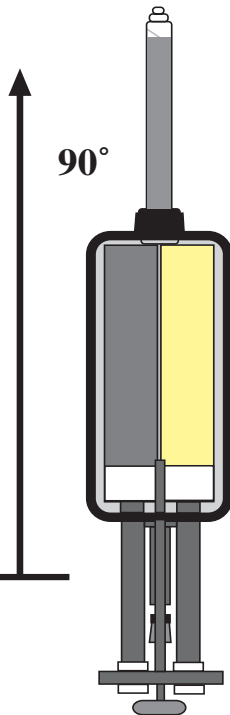
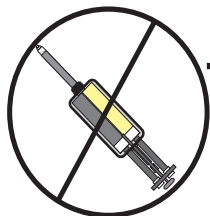
3

Pull Back
Pistons in Gun
and Securely
Load Cartridge
in Cradle



4

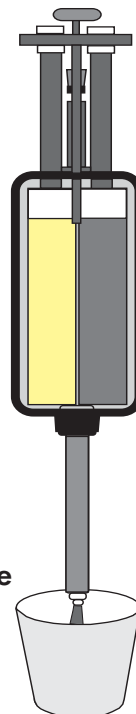
Hold Gun
Straight Up at
a 90° Angle
and Slowly
Pull Trigger to
Purge Air from
Unit. Drive
Material to
Top of Mixer.



5

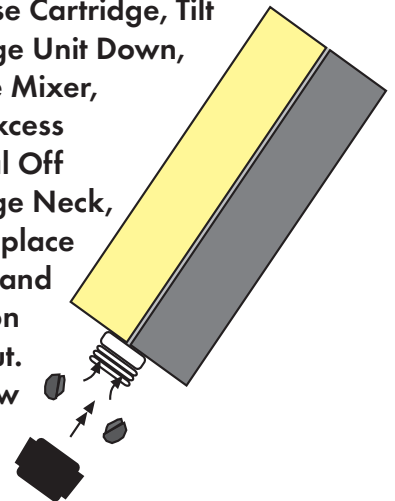
Tilt Gun
Down and
Squeeze First
2-3 Shots of
Material into
A Disposable
Cup, Etc.

Gun Should Be
Tilted Down
Whenever
Dispensing or
When Cartridge
is Being Used.



6

To Re-use Cartridge, Tilt
Cartridge Unit Down,
Remove Mixer,
Wipe Excess
Material Off
Cartridge Neck,
Then Replace
D-Caps and
Screw on
Lock Nut.
Use New
Mixer
with
Next
Application.



INSTRUCTIONS FOR USING THE CARTRIDGE UNIT (CONTINUED)**1. Product Description**

Spal-Pro RS 88 is a rapid-setting, two-component polyurea liquid of 100% solids content. When cured, Spal-Pro RS 88 is a charcoal gray solid with a hard rubber-like hardness of A88-92(70°F). Spal-Pro RS 88 is designed for use in areas where final temperatures range from +40°F to +120°F.

Spal-Pro RS 88's primary use is as a filler for control and construction joints in floor areas subjected to hard wheel vehicles. It is also ideal for filling joints in non-traffic areas such as under racks, at walls, at column diamonds and for filling random cracks.

Due to Spal-Pro RS 88's rapid gel time of 2-4 minutes, it must be installed using a dual-feed power dispensing system or with pre-filled dual cartridges available from manufacturer. Manual dispensing is impractical due to rapid-set.

Limitations

- Spal-Pro RS 88 has limited expansion capabilities due to its relatively high hardness.
- Spal-Pro RS 88 should only be used in areas where temperature is 40°F or higher.
- Spal-Pro RS 88 is intended for interior use only. Exposure to sunlight or other sources of UV rays can cause discoloration.
- Contact manufacturer if product will be exposed to direct chemical contact once installed.

2. Material Storage

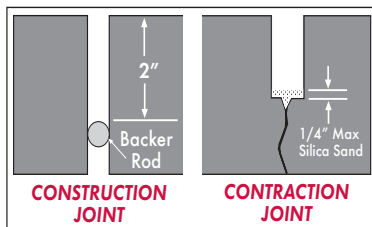
Keep Spal-Pro RS 88 in tightly sealed containers in dry, shaded areas where temperatures average 50°F to 85°F (10°C to 30°C). Protect from sunlight, freeze-thaw and excessive temperatures. If storing partially used part B material, place nitrogen blanket (or other desiccant) over material prior to storage.

3. Timing of Installation

The installation should be deferred as long as possible (ACI recommends slab cure of 60-90 days plus). A minimum slab cure of 30 days is also recommended. Cooler areas should be stabilized at ultimate temperature and held for 7 days or more.

4. Equipment and Tools

Spal-Pro RS 88 must be installed using dual-feed, power dispense pump systems set at 1:1 by volume mix ratio, or with pre-filled, dual cartridges available from manufacturer. Additional equipment/supplies that may be required include conventional hand tools, solvent for clean-up, wiper cloths, etc. Personal safety equipment is always a must with chemicals. See MSDS for complete information.

5. Joint Design Details**6. Surface Preparation**

All concrete surfaces to which Spal-Pro RS 88 will bond must be structurally sound and free of substances that may impair adhesion (saw cut laitance, dirt, debris, coatings/sealers, frost, oil, etc.). For narrow joints in new floors, we recommend the use of a dustless saw with a blade that will properly expose bare concrete on both joint walls. For adhesion to steel, mechanically abrade steel to insure mechanical bond. Call M/M for additional methods.

7. Installing at Various Temperatures

Spal-Pro RS 88's working (gel) time and cure rates will vary slightly depending on work area temperature and temperature of product at time of installation. In general, the gel time and cure time will be shorter when the area and product temperatures are higher.

8. Installation of Spal-Pro RS 88

Important: Thoroughly read MSDS and balance of these instructions before opening containers or attempting to install. Wear/use all personal safety equipment called for in MSDS and follow all cautions concerning working environment.

Dual-Cartridge kits may also incur settlement. Aggressively shake to re-disperse all chemicals. Dual cartridge units should be maintained at about the same temperature by keeping them in a warming box or warm/hot water.

Filling Joints and Cracks

All fillers including Spal-Pro RS 88 have the potential to leave residue or stain on adjacent slab surface. If appearance is important, or if coating/sealer is to be applied later, protect adjacent surfaces with tape, soap, or Metzger/McGuire's SPF (Stain Preventing Film). Avoid getting sealer inside joint or crack; adhesion could be compromised. Joint should be filled in one pass, filling from bottom to top to avoid entrapping air bubbles.

Spal-Pro RS 88 is only effective when its finished profile is flush with the floor surface. To achieve this, we recommend overfilling (crowning) then razoring off the excess after the product has converted into a complete solid. Razoring is best achieved 1-1/2 hours after filling, depending on the area temperature and the temperature of the product at time of installation. After three hours the filler's increasing hardness may make shaving more difficult, resulting in ratchet or chatter marks. For smoother shaving after three hours apply a small amount of heat immediately prior to shaving. Do not overheat filler or burn/char. Do not grind or sand the overfill.

9. Caution on Chemical Cure

Spal-Pro RS 88 cures chemically through a reaction of parts A & B. Exercise caution during cure; do not inhale fumes, do not get chemicals on skin or in eyes. See MSDS.

10. Low Fills, Bubbles

Should Spal-Pro RS 88 cure too low, solvent wipe and apply additional filler. Spal-Pro RS 88 adheres well to itself. Abrading the first pass will provide mechanical bond insurance for second pass. If bubbling or air entrapment occur, follow material application with a propane torch or heat gun to eliminate air pockets. Heat should be applied prior to initial cure (within approx. 2 minutes).

11. After the Installation**Clean-Up**

Clean all tools and spills of unreacted material with solvent (toluol, xylol, MEK, etc.). Cured material can be removed by razoring or sanding.

Surface Treatments

If the floor is to be acid-etched, Blast-Trac'd or coated, allow several days cure if possible. A test coat is always advisable. Once cured, Spal-Pro RS 88 is not affected by mechanical cleaning or most scrubbing compounds.

Traffic Exposure

Time required prior to exposure to traffic will depend on room operating temperature and product temperature when installed. In general, Spal-Pro RS 88 is ready for light traffic in 1 hour and full, heavy traffic in 2 hours. Always test the filler for hardness prior to traffic exposure.

12. Joint Filler Separation

Separation (adhesive or cohesive) will not likely occur if floor has been allowed to stabilize at its ultimate operating temperature. If the room temperature is subsequently dropped considerably, a slight amount of separation may occur. These separation voids may then be refilled with additional Spal-Pro RS 88.

CAUTION: THESE ARE ABBREVIATED INSTRUCTIONS. READ AND UNDERSTAND FULL INSTALLATION INSTRUCTIONS AND MSDS PRIOR TO USE TO NOTE SAFETY PRECAUTIONS AND WARNINGS FOR USE OF THIS PRODUCT.

WARRANTY: Metzger/McGuire Co. solely and expressly warrants that its Spal-Pro RS 88 shall be free from defects in material and workmanship for 180 days from the date of purchase. Unless authorized in writing by an officer of Metzger/McGuire, no other representations or statements made by Metzger/McGuire or its representatives, in writing or orally, shall alter this warranty. Metzger/McGuire makes no warranties, implied or otherwise, as to the merchantability or fitness for ordinary or particular purposes of its products and excludes the same. If any Metzger/McGuire product fails to conform with this warrant, Metzger/McGuire will replace the product at no cost to the purchaser. Purchaser's sole remedy in any case shall be limited to the purchase price or replacement cost of product and specifically excludes labor and the cost of labor, lost wages and opportunity costs, and all other possible incidental, consequential or special damages resulting from any claim of breach of warranty, breach of contract, negligence or any legal theory. Any warranty claim must be made within one (1) year from the date of material purchase. Metzger/McGuire does not authorize anyone on its behalf to make any written or oral statements which in any way alter the installation procedures or written installation instructions published in its product literature or on its packaging labels. Any installation of Metzger/McGuire products which fails to conform with such installation information or instructions shall void this warranty. Purchaser shall be solely responsible for determining the suitability of Metzger/McGuire's products for the purchaser's intended purpose.