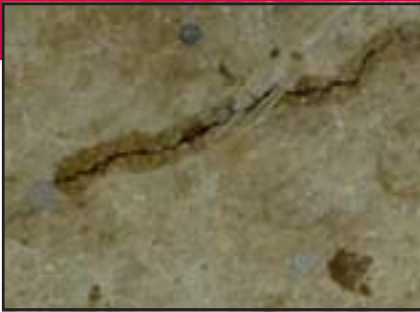


RANDOM CRACKS (Less than 1/8" Width)



REPAIR MATERIAL

Structural Repair Polymer
Rapid Refloor

Cooler
Rapid Refloor

TOOLS & EQUIPMENT NEEDED

Preferred:
Right angle grinder w/soft wire wheel
Med. grit grinding pad
Vacuum/compressed air

Minimal:
Wire Brush
Vacuum/compressed air

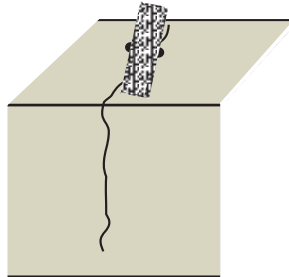
DIFFICULTY



STEP 1

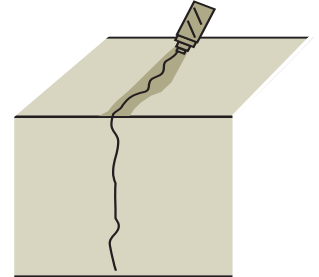
If a crack has no "islands," no chipping, and is less than 1/8" wide, we recommend that it *not* be saw cut open.

Clean crack out using right angle grinder with soft wire wheel or wire brush then vacuum/blow out with air.



STEP 2

After crack is clean, apply **Rapid Refloor** into crack, slightly overfilling. Monitor material and refill if seepage occurs. After cure use Med. grit grinding pad to remove excess **Rapid Refloor** flush with surface.



RANDOM CRACKS (1/8" Wide or Greater)



REPAIR MATERIAL

Semi-Rigid Epoxy or Polyurea Joint Filler
MM-80
Spal-Pro 2000
Spal-Pro RS-88

Freezer/Cooler
Spal-Pro 2000 or RSF

TOOLS & EQUIPMENT NEEDED

Preferred:
Right angle grinder w/dustless shroud
Crack chasing saw
Diamond blades-"U" or "V" shaped
Vacuum system
Razor scraper / torch

Minimal:
Right angle grinder
Diamond blades-"U" or "square" shaped
Shop vac
Razor scraper / torch

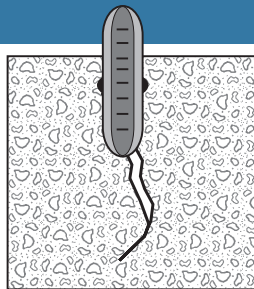
DIFFICULTY



STEP 1

Use a right angle grinder with with a diamond square cut or "V" blade to rout out crack to a depth of 1/2" minimum, 3/4" preferred.

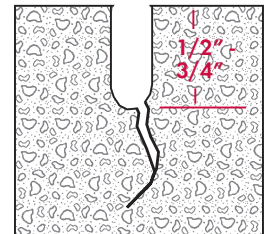
Be sure that remaining concrete along edge is structurally sound.



STEP 2

Clean out any remaining debris or loose elements. Vacuum or blow clear with compressed air.

Choke off base with silica sand. (If necessary due to excessive material seepage).



STEP 3

Apply joint filler and allow it to seep into the crack. Reapply until seepage stops, if necessary, and seal off crack with silica sand if seepage continues. Allow to cure. Razor off excess.

(If using **MM-80**, apply heat prior to shaving).

